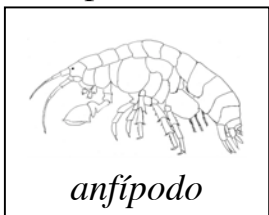


Guía de Identificación de Macroinvertebrados en Agua Dulce

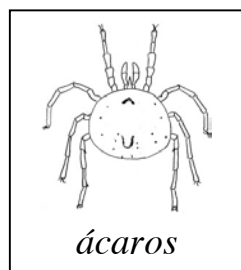
Con patas articuladas

Sin patas

10 patas o más



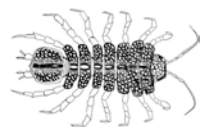
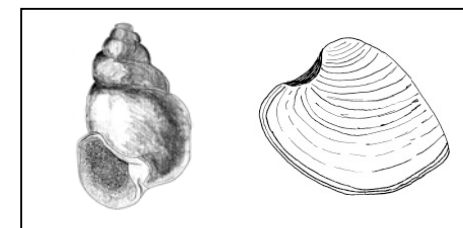
8 patas



6 patas
A la página 3

Tipo gusano
o lombriz
(sin caparazón
o choncha)

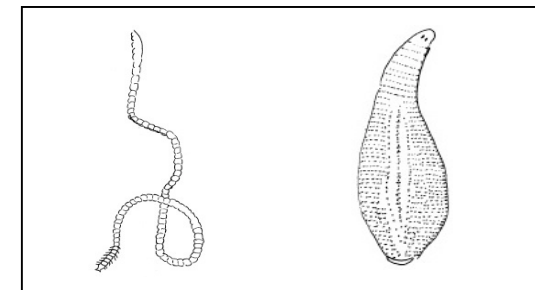
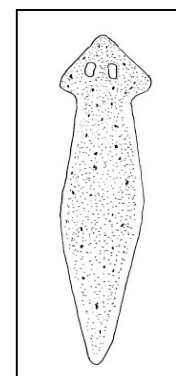
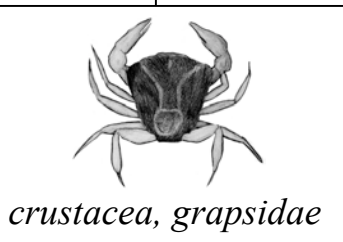
Con caparazón o concha



Cabeza y/o
apéndices carnosos
A la página 2

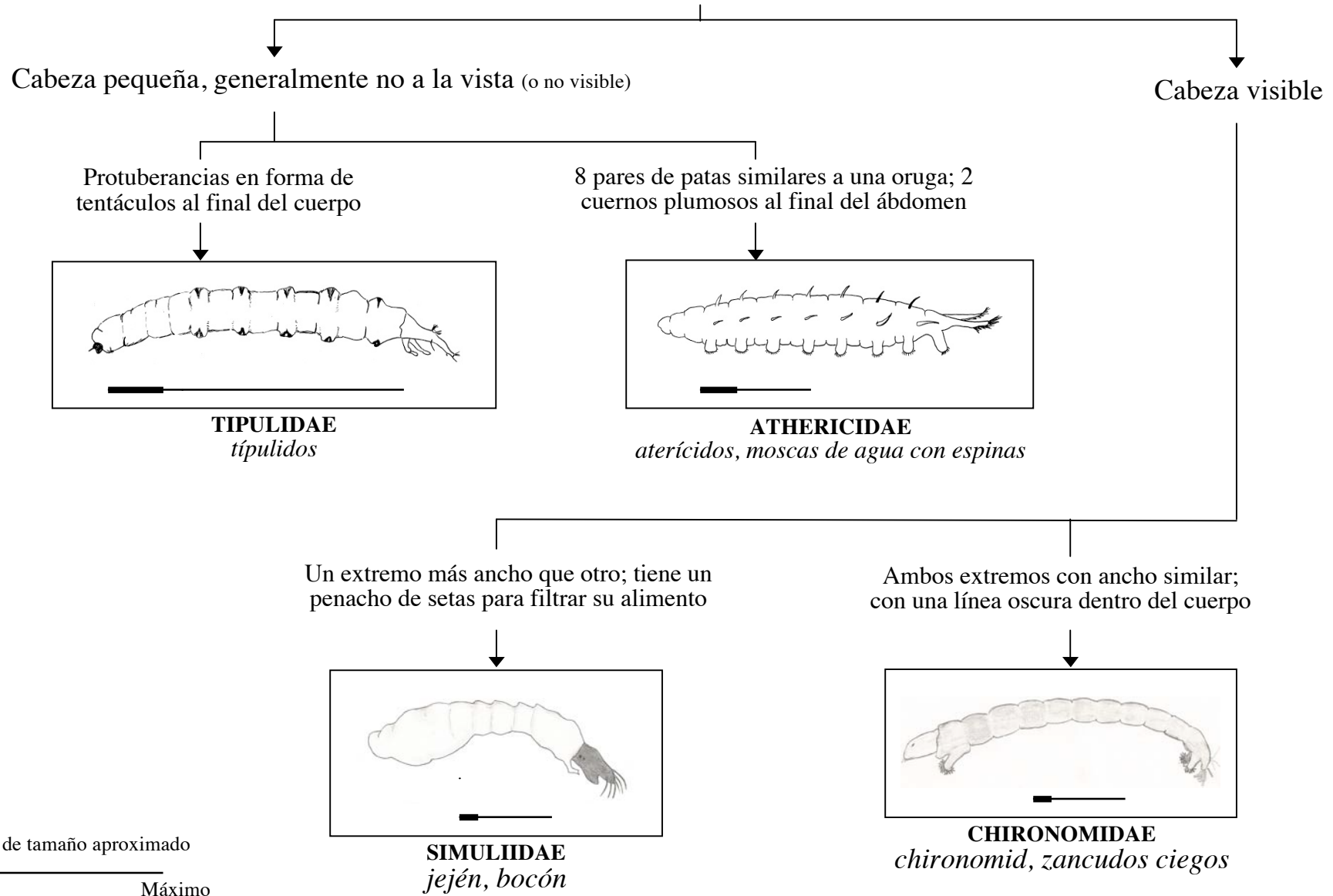
Lombriz plano
no segmentado

Lombrices
segmentados

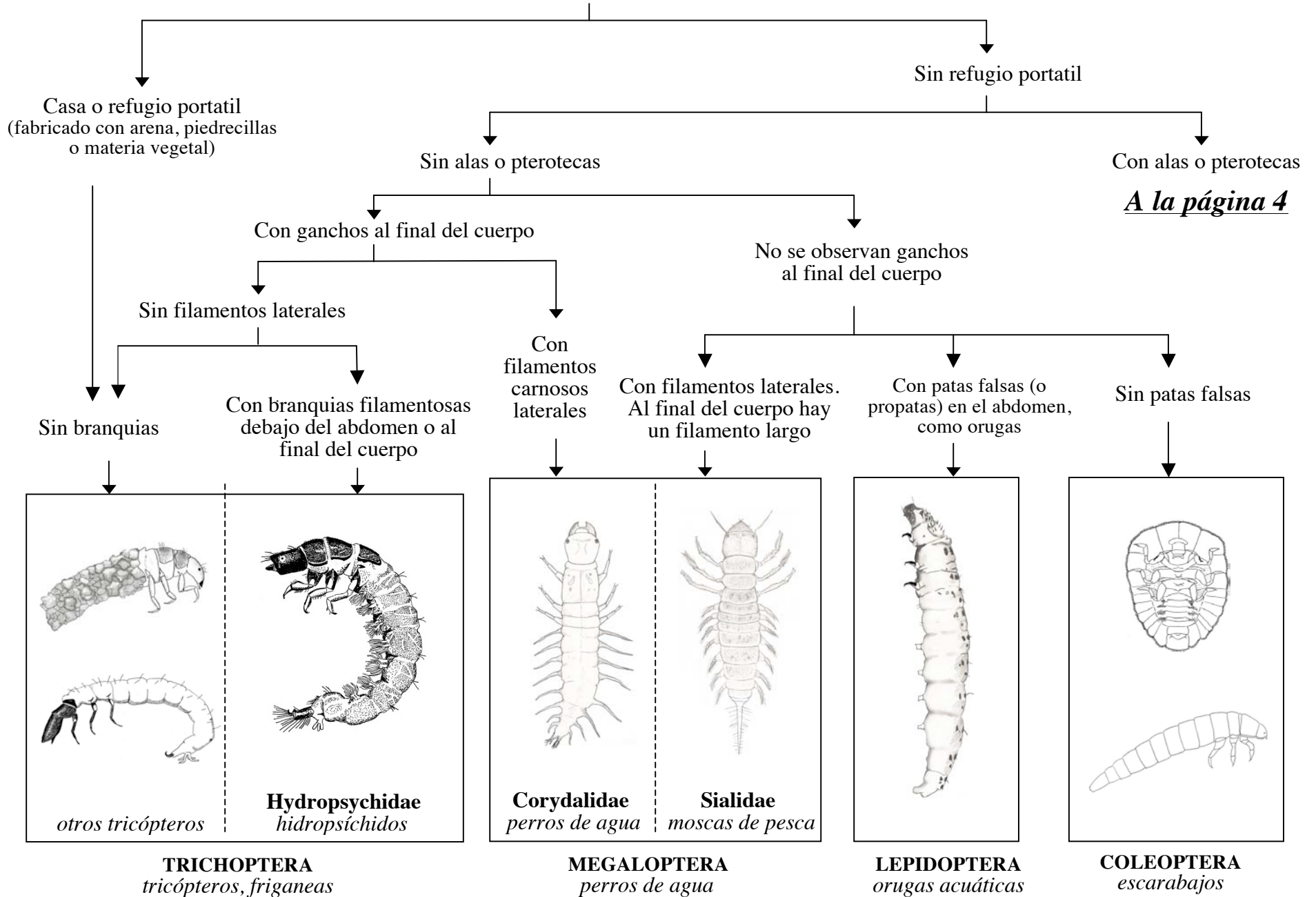


Tipo gusano con cabeza y/o apéndices carnosos (protuberancias)

DIPTERA – moscas



Seis patas segmentadas o articuladas



Alas o estuches presentes

